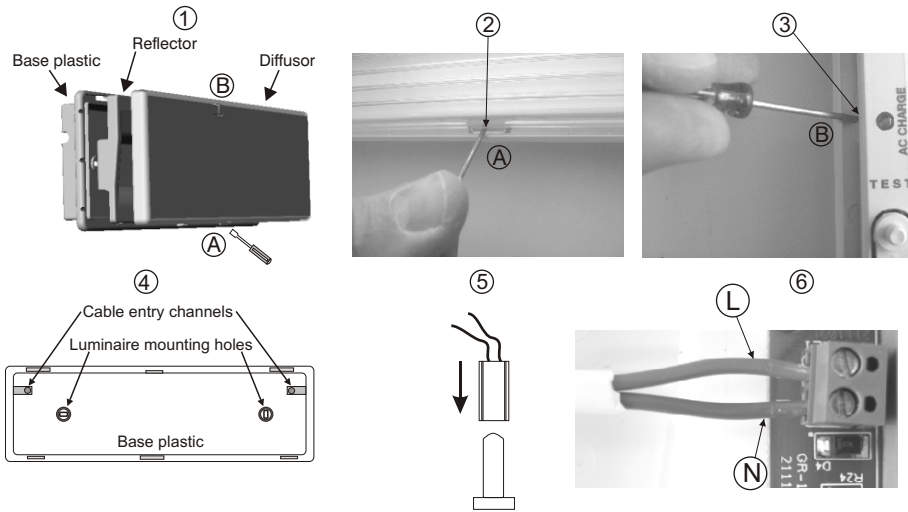


INSTALLATION INSTRUCTIONS



- ① To install the luminaire you must dismantle it to 3 parts.
- ② Place a flat blade screwdriver in the area **A** to release the diffuser's plastic hook.
- ③ Place a flat blade screwdriver in the area **B** to release the reflector's plastic hook.
- ④ Use the included mounting parts to mount the base plastic.
Pass the mains cable thru a cable entry channel.
- ⑤ Place the battery's connector to the corresponding connector on the P.C.B.
- ⑥ Connect the mains cables to the terminal blocks.
- ⑦ Refit the removed parts in steps 2 and 3 (mind the correct orientation) and the luminaire is ready to operate.

NOTE: LED= Light Emitting Diode

LABELING EXPLANATION:

X: Self contained
1: Maintained
A: Including test device
180: 3 hour duration

All the types of **Easy Light** series, are also produced with a new designed crystal with **GR-XXX/CRV** code, for example **GR-310/12L/180/CRV**.

"EASY LED'S LIGHT" SERIES FOR MAINTAINED / NON-MAINTAINED (OPTIONAL) LUMINAIRES

TECHNICAL CHARACTERISTICS	GR-310/12L/180
OPERATION VOLTAGE	220-240V AC/50-60Hz
MAXIMUM POWER CONSUMPTION	4 VA / 3.5W
BATTERIES (Ni-Cd)	3.6V/1.5Ah
BATTERY PROTECTION	From overcharge and full discharge
INDICATIONS - CONTROLS	Battery charge indication LED, TEST button
CHARGING TIME	24 h
MINIMUM AUTONOMOUS DURATION	180 min
ILLUMINATION SOURCE	White LED's
ILLUMINATION (230V / EMERGENCY)	35lm / 85lm
DEGREES OF COVER PROTECTION	IP 40
PRODUCED IN ACCORDANCE WITH	EN 60598-1, EN 60598-2-22
OPERATION TEMPERATURE RANGE	0 to 40 °C
RELATIVE HUMIDITY	Up to 95%
CONSTRUCTION MATERIALS	Bayblend FR3010, transparent polycarbonate
EXTERNAL DIMENSIONS	350 x 134 x 45 mm (CRV 362 x 134 x 58 mm)
TYPICAL WEIGHT	740gr.
GUARANTEE	3 years (1 year for the battery)

GENERAL

These luminaires are used in places where emergency luminaires are needed.

Each luminaire must be permanently connected to mains power supply.

In normal operation the led strip lights and the battery is charging.

In case of a mains power supply failure the luminaire will light the led strip automatically in emergency mode. When the mains power supply is restored the device turns to normal operation.

NON-MAINTAINED OPERATION

By default the luminaire operates as maintained.

The luminaire has a possibility to operate as non-maintained. To change the maintained to non-maintained operation (when the luminaire is connected to the mains power supply), push continuously the TEST button approximately for 10 seconds, until the led strip turns off for 0.5 seconds.

If you release the TEST button instantly, the led strip will remain off operating as non-maintained luminaire. In case that you want for the luminaire to operate as maintained again, repeat the previous procedure. Releasing the TEST button, the led strip will light with lower intensity indicating that the luminaire operates as maintained.

INSTALLATION

To install the luminaire follow the installation instructions in page 4.

ATTENTION!!!

1. Operations for installation, maintenance or testing must be done by authorized personnel only.

2. The device must be connected to the mains power supply thru a fuse dependent by the total amount of the line's power load.

3. It is suggested to check every month the indication LED for battery charging, and by pushing the TEST button to check the emergency circuit. The led strip should: a) light with bigger intensity as long as the TEST button is pressed (maintained operation), b) light as long as the TEST button is pressed (non-maintained operation). If the luminaire doesn't work as described above contact the installer.

4. It is suggested to check every 6 months the minimum autonomous duration by disconnecting the mains power supply. Count the time that the led strip lights and in case of less time than the minimum autonomous duration the battery must be replaced. If the measured time is considerably less than the minimum autonomous duration contact the installer. In case of battery or led strip replacement, these must be replaced by parts of the same type.

5. In case of inactive use for a period greater than 2 months, disconnect the battery by pulling out the battery's connector.

6. **It is not allowed to discard batteries in to common trash bins, they must be discarded only in battery recycling points. Do not incinerate.**

MARKING PANEL SP-114

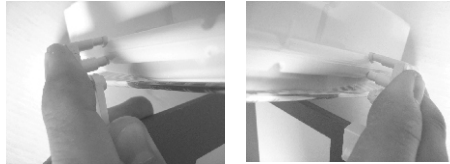
A marking panel SP-114 can be installed on the luminaire in 3 different locations. This marking panel is installed perpendicular to the diffusor of the luminaire, as shown in the pictures below. The panel is pre-printed and has a plastic accessory on each side that is used to fasten the panel to the luminaires.

There are 2 arrow stickers that can be placed in each side of the marking panel to point to the desired direction.



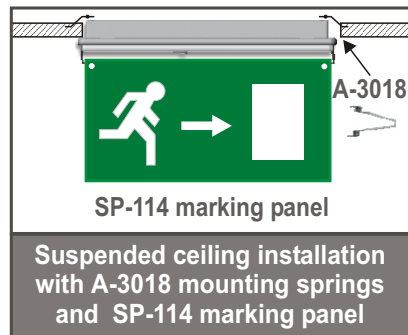
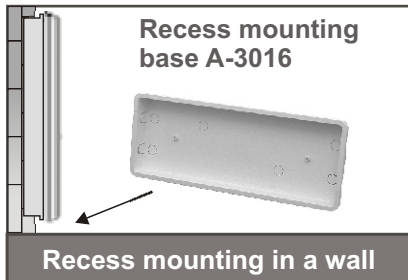
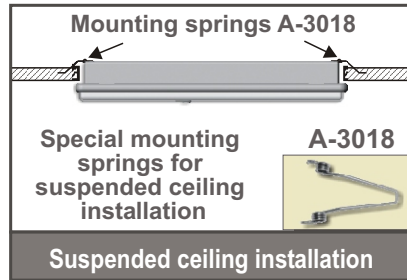
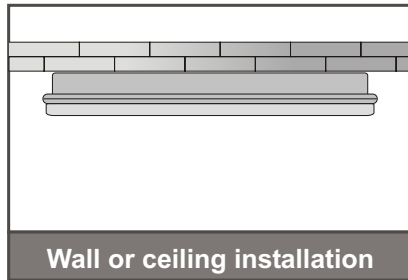
Placing the SP-114 marking panel

Place the plastic mounting accessories of the marking panel as shown in pictures.



NOTE!! This marking panel (SP type) can not be installed on CRV luminaires.

Installation methods



Mounting methods

All "Easy Light" can be mounted either surface or recess mounted in walls or suspended ceilings. For recess mounted installations, special accessories are required which can be found in the catalog and must be ordered separately.

Suspended ceiling installation.

On the bottom of the base plastic of the Easy light luminaire there are two H shaped cut outs. These are used to install the A-3018 mounting springs.

1. With a sharp tool remove the appropriate plastic pieces to fit the mounting springs. First place the edges of the mounting spring to the respective holes and install the one end of the coil to the support axis.
2. Install the other end of the coil to the other support axis.
3. Bend the springs and place the luminaire to the respective suspended ceiling's hole.

The luminaire's placement to the suspended ceiling must be done after the connection with power supply cables.

Recess mounting in a wall

The special mounting base (A-3016) can be built in the wall and on it can be mounted the luminaire with the A-3016 included screws, following the installation instructions of the luminaire. The mounting base contains pre-etched holes for cable entry that are aligned with the cable entry holes of the luminaire.

PLACING A-CRV PARTS

To install the curve crystal A-CRV you must first install the included plastic extension to mount it on the TEST button.

